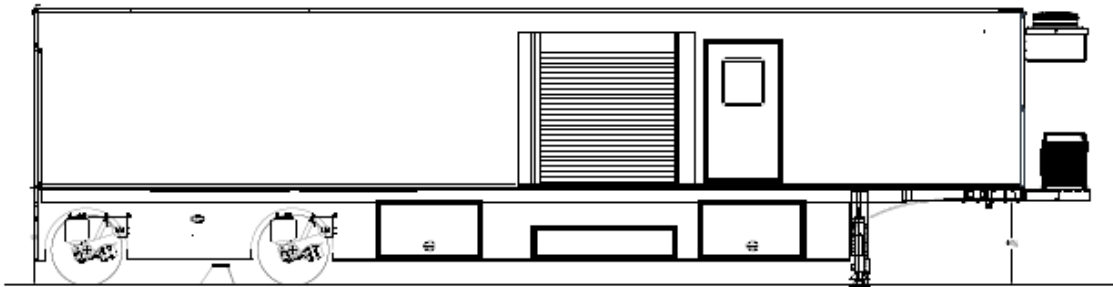


# Site Planning Guide

## MRI SYSTEMS

**13'-6" H x 8'-6" W x 48'-0" L USA UNIT**



© 2019 Advanced Mobility Specialty Vehicles, All Rights Reserved

This manual contains confidential information of Advanced Mobility Specialty Vehicles.

This manual may be used only by you, and only for the purposes for which it was intended. You may not disclose this manual or the confidential information it contains outside of your company.

If you wish to copy any part of this manual, or to use it other than as described above, you must contact Advanced Mobility Specialty Vehicles seeking permission to do so.

You may not copy it or any part of it without the written permission of Advanced Mobility Specialty Vehicles.

### North America

#### **Corporate Headquarters**

Advanced Mobility Specialty Vehicles

500 Crossing  
University Park, IL.

60484

USA

(001) 708-235-2800

(001) 708-235-2002 FAX



**Kentucky Trailer**  
6370 Emerald Pkway, Ste.106  
Monee, IL 60449  
(708) 235-2800 main number  
(708) 235-2002 fax

Custom Specialty Vehicles



MR-D20-00  
Page 2 of 16

**As part of Advanced Mobility Specialty Vehicles' on-going program to improve its products and service, Advanced Mobility Specialty Vehicles reserves the right to implement product changes and disseminate changes in design and service information without notice or recourse.**

**For questions regarding the Operation or Service of this unit, please call Advanced Mobility Specialty Vehicles at 1-800.839.0630**

## List of Revisions

Date	Revision Number	Revised by	Description
6/14/19	00	Gabriel Gandara	Initial Release

### Notice

In accordance with our policy of product development, Advanced Mobility Specialty Vehicles reserves the right to make changes in the equipment, design, specifications, and materials of the product described herein. If there are any inconsistencies between this manual and the mobile unit that inhibit serviceability, please contact Advanced Mobility Specialty Vehicles for assistance.

This manual is provided in the mobile unit. The documentation package should be kept in the mobile unit at all times.

Any problems or questions related to the components or systems covered in this manual please direct to:

Advanced Mobility Specialty Vehicles

500 Crossing  
University Park II.60484  
708-235-2800  
708-235-2002 FAX

<http://www.amstcorp.com>



**Kentucky Trailer**  
6370 Emerald Pkway, Ste.106  
Monee, IL 60449  
(708) 235-2800 main number  
(708) 235-2002 fax

Custom Specialty Vehicles



MR-D20-00  
Page 3 of 16

# Table of Contents

<b>List of Revisions .....</b>	<b>2</b>
➤ Notice .....	2
<b>Introduction .....</b>	<b>5</b>
<b>Support Pad Requirements.....</b>	<b>5</b>
➤ Trailer Weight .....	5
➤ Recommended Service Pad and Support Pad Requirements.....	5
➤ Support Pad Depth.....	6
➤ Support Pad Levelness .....	6
➤ Vehicle Access .....	6
➤ Steel Reinforced Concrete Pad.....	6
➤ Recommended Attachment to Facility .....	6
➤ Exclusion Zone.....	6
➤ Vehicle Movement.....	6
➤ Vibration / Foundation Design.....	7
➤ Swing Clearance Note .....	7
<b>Customer Power Requirements.....</b>	<b>7</b>
➤ Lockout/Tagout.....	7
➤ Electrical Service.....	7
➤ Configuration .....	7
➤ Frequency .....	7
➤ Phase Balance .....	8
➤ Maximum voltage variation .....	8
➤ Connector Type.....	8
➤ Customer Facility.....	8
➤ Voltage Surges.....	8
➤ Power Source Monitoring (Facility Only).....	8
➤ Ground Conductor.....	8
➤ Magnetic Shielding .....	9
➤ R.F. Shielding.....	9
<b>Mobile Grounding Requirements .....</b>	<b>9</b>
➤ Special Grounding Note: .....	9
<b>Telephone and Data Service Requirements .....</b>	<b>9</b>
➤ Telephone Service .....	9
➤ Data Service .....	9
<b>Water and Chiller Requirements.....</b>	<b>10</b>
➤ Humidifier Fresh Water Direct Connection .....	10
➤ Water Supply Requirements (Sink Option).....	10
➤ Waste Water Connections (Sink Option).....	10

The information contained in this booklet is the property of AMST. The contents are confidential. They may not be used, either partially or wholly, for any purpose inconsistent with the purpose for which it was produced. The contents may not be reproduced or disclosed without written permission of Advanced Mobility Specialty Vehicles.



**Kentucky Trailer**  
6370 Emerald Pkway, Ste.106  
Monee, IL 60449  
(708) 235-2800 main number  
(708) 235-2002 fax

*Custom Specialty Vehicles*



MR-D20-00  
Page 4 of 16

## Table of Figures

Figure 1: Plan View and Pad Layout.....	11
Figure 2: Right Side Elevation .....	13
Figure 3: Left Side Elevation .....	14
Figure 4: Front and Rear Elevation .....	15
Figure 5: Russellstoll Service Outlet.....	16
Figure 6: Russellstoll Chart.....	17
Figure 7: Turning Requirements.....	18

## Introduction

The purpose of this document is to provide the basic information needed for site planning. For specific information not contained in this document, please contact Advanced Mobility Specialty Vehicles.

The mobile unit requires sufficient room to be maneuvered and positioned for setup and takedown. The mobile unit has many storage compartments and service doors that require access during these procedures as well as during operation. The patient lift, entry stairs, and optional platform require additional space on the passenger side of the mobile unit. Refer to the drawings provided for actual locations of doors, platform lift, and stair sizes and locations.



This type of notice indicates a potentially hazardous situation, which if not avoided, could result in injury or death to the operator of the mobile unit.



This type of notice indicates a potentially hazardous situation, which if not avoided, could result in irreparable damage to the mobile unit.



This type of notice is meant to inform the operator of useful information.

## Support Pad Requirements



If other modalities utilize the same support pad, it is recommended that non-ferrous reinforcement materials be used for pad reinforcement.



The Original Equipment Manufacturer (OEM) of the scanning equipment must approve plans for pad construction.

The following is a list of recommendations and requirements for a concrete support pad. However, due to varying site conditions, the actual pad design should be prepared by an appropriately licensed structural or architectural engineer.

### Trailer Weight

The weight of the trailer should be considered in the design of the support and service pads. The overall weight of the trailer is approximately 60,000 lbs. The weight on the rear axles is approximately 35,000 lbs. The weight on the King Pin is approximately 20,000 lbs.

### Recommended Service Pad and Support Pad Requirements

A service pad is recommended to provide adequate service access. The recommended size of the pad is 60" x 18', for details go to [Error! Reference source not found.](#)

### **Support Pad Depth**

Recommendations for the width and length of the pad are given above. Based upon existing site conditions, the depth should be determined by a local contractor. It is recommended that non-ferrous reinforcement materials be used for pad reinforcement. The OEM of the scanning equipment must approve plans for pad construction.

### **Support Pad Levelness**

The support pad must be level to ensure proper operation of the MRI system. The pad must not exceed .125" deviation in 10'-0". If the minimum support pads are selected, rather than the recommended single pad, they must also meet this specification.

### **Vehicle Access**

A firm, level surface is required around the mobile unit to provide access to the tractor/trailer, aid with patient handling, servicing the unit, and delivering of cryogens.

### **Steel Reinforced Concrete Pad**

Nonferrous reinforcement materials are recommended. If ferrous materials are used, contact the OEM of the scan equipment for the maximum weight allowed per foot.

### **Recommended Attachment to Facility**

An inflatable air bag or soft seal is recommended at the point of connection from the unit to the facility. Fixed or solid connections may hinder imaging quality. Contact Advanced Mobility Specialty Vehicles or the local OEM of the scanning equipment representative prior to construction if the proposed connection varies from the recommended.

### **Exclusion Zone**

The helium gas must be allowed to vent, unrestricted, to a non-accessible area, allowing the helium gas to dissipate.



To avoid the risk of injury and cold burns and the possibility of asphyxiation, access to the quench tube must be restricted by 10' to each side and below, and 20' vertically above the exit vent. Failure to do so could result in severe personal injury or death.

### **Vehicle Movement**

The MRI is very sensitive to vibration and moving metal. Consequently, all vehicle traffic shall be kept as far away as possible from the pad. Moving ferrous materials having the listed masses should be limited to areas as described in the OEM of the scanning equipment's site planning publication. Contact OEM of the scan equipment to obtain the latest version.

## Vibration / Foundation Design

Please contact OEM of the scanning equipment for the latest system specific vibration requirements.

## Swing Clearance Note

Please verify the actual dimensions of the rearmost projections on the cab of your tractor to the centerline of tandem suspension or centerline of the fifth wheel plate on your tractor. Refer to

for proper tractor sizing information.

## Customer Power Requirements



It is the operators' responsibility to verify that the shore power receptacle is of the same type and voltage as the connection that is supplied by Advanced Mobility Specialty Vehicles. Failure to do this can result in injury or death to the operator of the mobile unit as well as irreparable damage to the mobile unit.



The standard connector for the unit is a Russellstoll #DS2504 MP000/DF2032. If an existing site currently implements a different connector or connector configuration, please contact Advanced Mobility Specialty Vehicles in order to arrange for a compatible power connector before the unit leaves the facility.

## Lockout/Tagout

A Lockout/Tagout provision in accordance with OSHA Standard 1910.147 is required. The facility shore power disconnect device must be located within 40'- 0" of the unit and must provide for an effective lockout/tagout to facilitate safe service and maintenance of the unit.

## Electrical Service

One electrical power source receptacle is required for operation of the MRI system. It must be capable of providing 480 Volt A.C., 3 Phase, 112.5 KVA, fused at 150 Amps or 207.6 KVA, fused at 200 Amps (depending on modality's specifications). One source provides power to the medical system and the trailer systems, such as lighting and air conditioning.

## Configuration

The connector is wired for three phase, five wire, Y connection, with ground (not less than AWG #1/0).

## Frequency

60 Hz  $\pm$ 1.0%

## **Phase Balance**

The phase balance is + 2% maximum phase-to-phase line voltage difference lowest phase.

## **Maximum voltage variation**

The maximum voltage variation is  $\pm 10\%$  from nominal steady state (under the worst case conditions of line voltage)

## **Connector Type**

The unit is supplied with a 50-foot cable and male connector. The connector is a Russellstoll 200 Amp plug #DS2504MP000/DF2032.

## **Customer Facility**

The facility must have the matching receptacle as specified in

Figure 5: Russellstoll Service Outlet and [Error! Reference source not found.](#) The receptacle is a Russellstoll #DF2504FRAB0.

## **Voltage Surges**

Transient voltage variations caused by external loads must not:

- Exceed + 5%
- Exceed five cycles duration
- Occur more than ten times an hour.

## **Power Source Monitoring (Facility Only)**

**NOTE: Perform a power audit first.**

A power analyzer should be used to check the proposed Mobile MRI Series facility site power for average line voltage, surges, sags, reclosures, impulses, frequency and microcuts. A period that includes two weekends should be used to simulate several days of normal use. Analysis of the data and site history of any previous power problems with other X-ray systems or computer installations should be reviewed with your power and ground representative. Verify “brown-out” (low voltage) conditions, which may occur during summer months, will not exceed the allowable range.

Some analyzer models that are suitable for power monitoring are:

- Dranetz Model 658
- Dranetz Model 656A
- BMI 3630
- RPM

## **Ground Conductor**

An insulated ground conductor sized in accordance with National, State, and local codes shall be installed between the facility vault and the MRI System ground bus location in the power distribution unit.



## **Magnetic Shielding**

The MRI unit is equipped with magnetic shielding. The exclusion zone for cardiac pacemakers, neurostimulators, and other biostimulation devices is recommended at 5 gauss (0.5mT). Signs provided by the OEM of the scanner, must be posted to alert all who approach the unit of this requirement. The appropriate warning signs are permanently attached to the scan room doors.

The 1.0T and 1.5T magnet systems exclusion zone (5) gauss is restricted to within 8" of the exterior walls of the mobile unit.

## **R.F. Shielding**

The R.F. shield is included with the MRI system and will provide minimum level of attenuation:

- 15Mhz – 128Mhz, 90db.

# **Mobile Grounding Requirements**

## **Special Grounding Note:**

The unit must have an earth driven ground rod within five (5) feet of the facility power receptacle. A grounding cable of a minimum #3/0 AWG must be connected between the grounding rod and the grounding pin of the facility power receptacle. Another cable to be kept as short as possible may also be connected between the ground stud on the Incoming Power Distribution Panel and an earth driven ground rod. A separate grounding conductor must still be run with the phase conductors to the source of power from the grounding pin of the facility power receptacle in accordance with NEC 2002 Article 250-24.

# **Telephone and Data Service Requirements**

## **Telephone Service**

The mobile unit may or may not be supplied with telephone connections as this is dependent on the requirement of the customer.

If equipped the connector type that is used and supplied by Advanced Mobility Specialty Vehicles is an all-weather Hubbell PH-6595 (inlet) with a model PH-6624 connector body.

If equipped the customer should purchase and install at least the number of connections that were specified with all-weather Hubbell PH-6597 phone outlets for use at the site.

If equipped two all-weather Hubbell PH-6599, 50'-0" telephone connecting cables are included with the unit. If additional cables are required, the customer must purchase them.

## **Data Service**

The mobile unit is supplied with data line connections that utilize RJ-45 outlets. The number of outlets are dependent on customer requirements.

The customer is required to purchase the data connection cables for use with the data line connections. The data line connections each require a 50'-0" CAT-5E cable with RJ-45 connections.

## Water and Chiller Requirements

### **IMPORTANT**

During winter conditions, provisions must be made to ensure that water lines do not freeze because of weather conditions.

### Humidifier Fresh Water Direct Connection

The unit contains a fresh water Direct Connection for the humidifier. The direct connection is located at the forward left side of the trailer. Fresh water mist is injected into the return air plenum through a spray nozzle that is controlled by a Humidistat through an automatic supply on demand valve. Any excess water is drained from the bottom of the plenum to the outside of the unit.

The direct connect utilizes a  $\frac{3}{4}$ " garden hose male threaded hose coupling.

### Water Supply Requirements (Sink Option)

The mobile unit will be supplied with a  $\frac{3}{4}$ " diameter, 20'-0" long hose terminated with a  $\frac{3}{4}$ " I.P.S male threaded hose connector located on the left side of the mobile unit. The facility must provide a  $\frac{3}{4}$ " female connector and a water supply that meets the following specifications:

A flow rate of 5 gallons per minute.

45-60 PSI.

A maximum temperature of 70°F.

### Waste Water Connections (Sink Option)

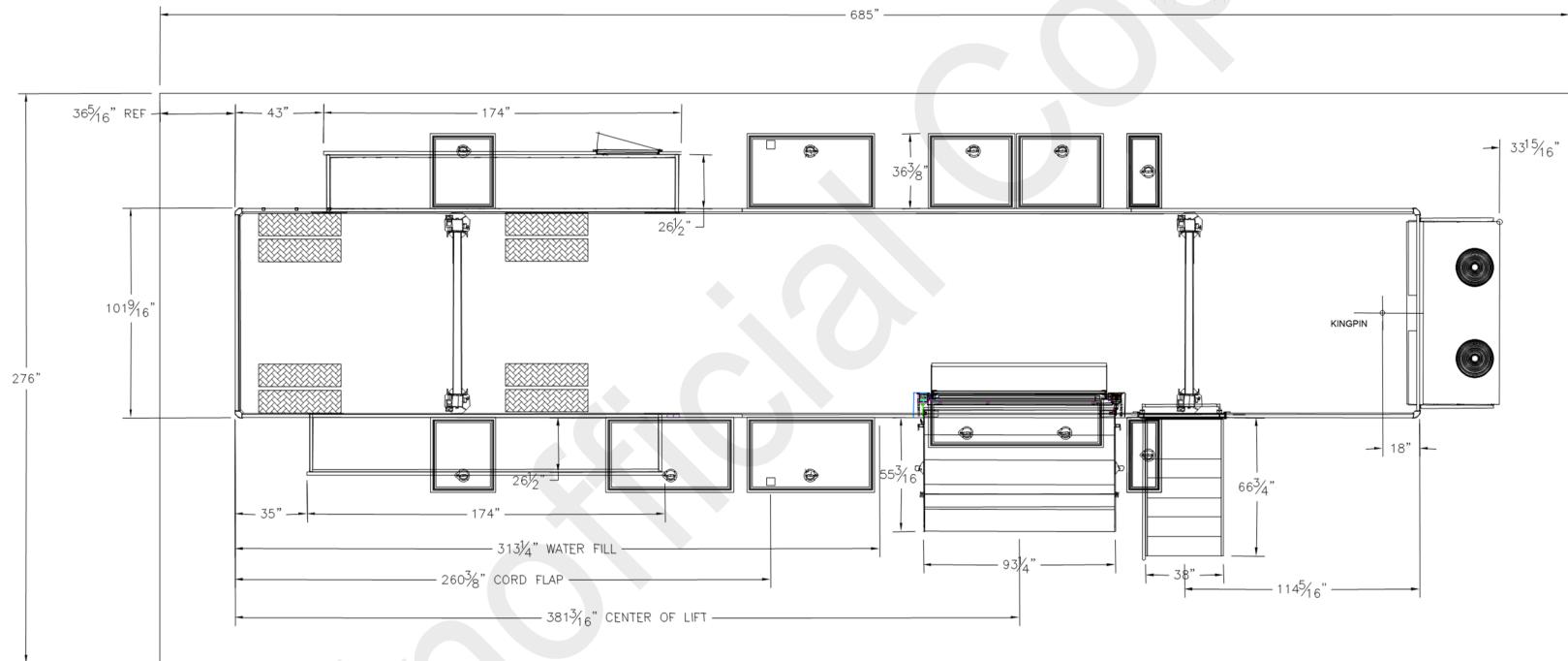
A  $\frac{3}{4}$ " IPS male connection is required to sink wastewater.

Any pipes and drains within 20'-0" of the magnet isocenter should be of non-ferrous materials such as PVC, copper, or brass. All plumbing must comply with all applicable codes.

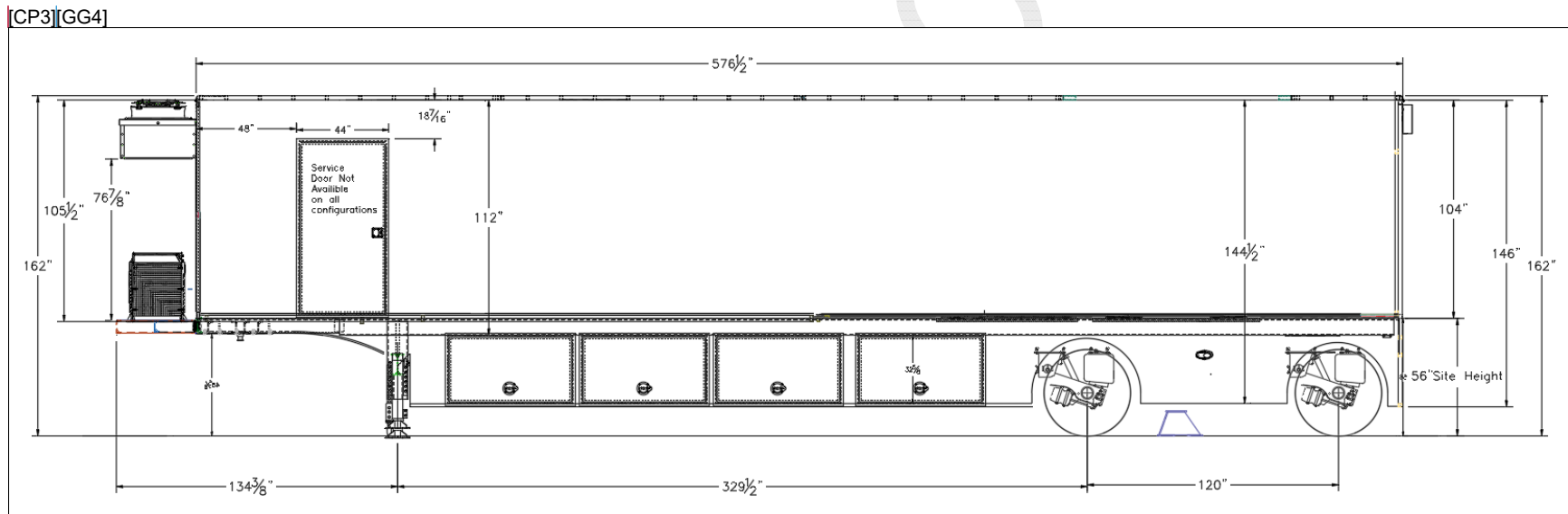
The mobile unit is supplied with a 20'-0" long  $\frac{3}{4}$ " diameter hose that is terminated with a  $\frac{3}{4}$ " female threaded connector for sanitary wastewater drainage located on the left side of the mobile unit. The facility must provide means of sanitary wastewater drainage from the system, which complies with all local applicable codes.

**Figure 1: Plan View and Pad Layout**

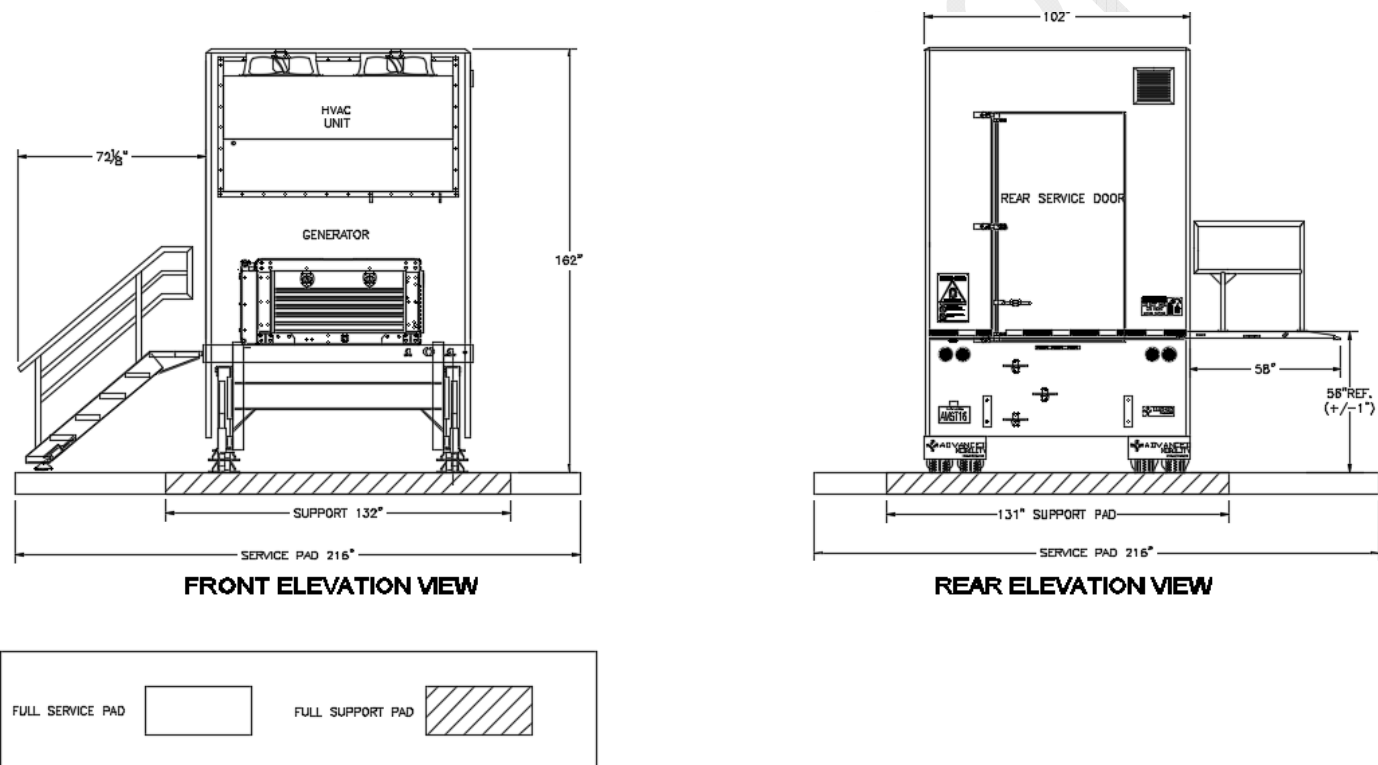
[CP1][GG2]



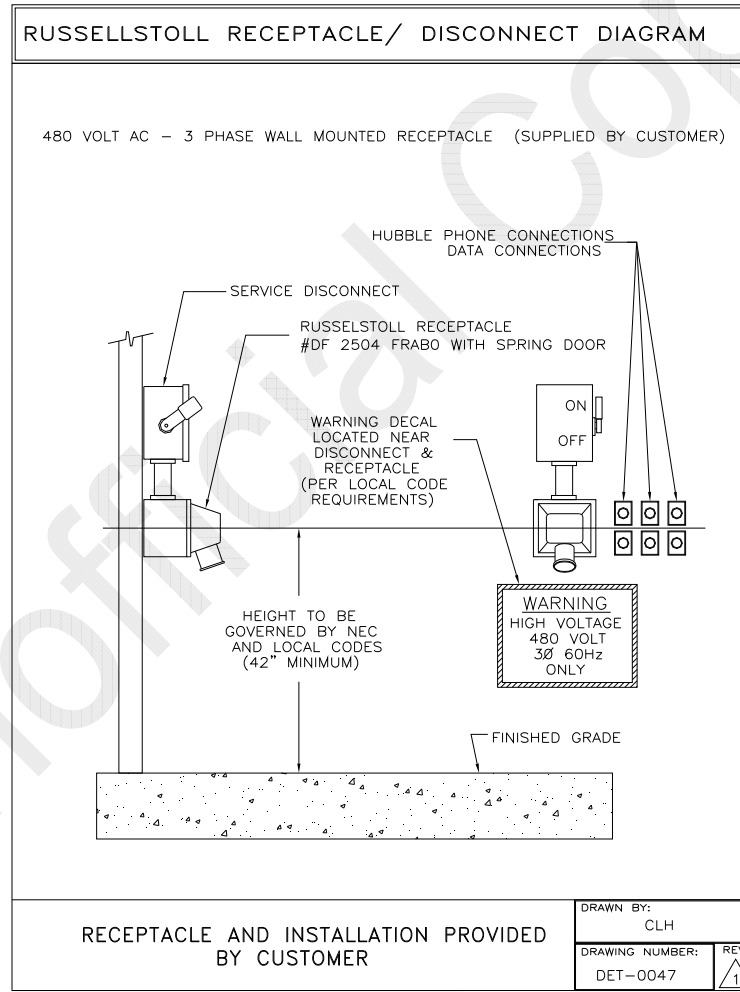
**Figure 3: Left Side Elevation**



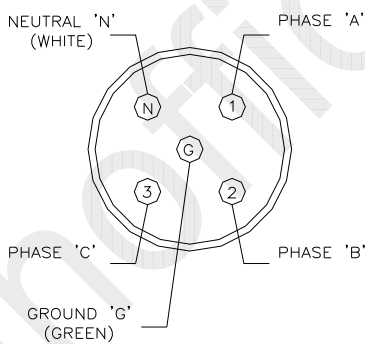
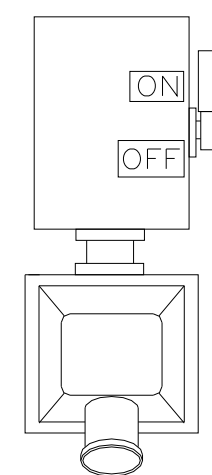

**Figure 4: Front and Rear Elevation**



**Figure 5: Russellstoll Service Outlet**



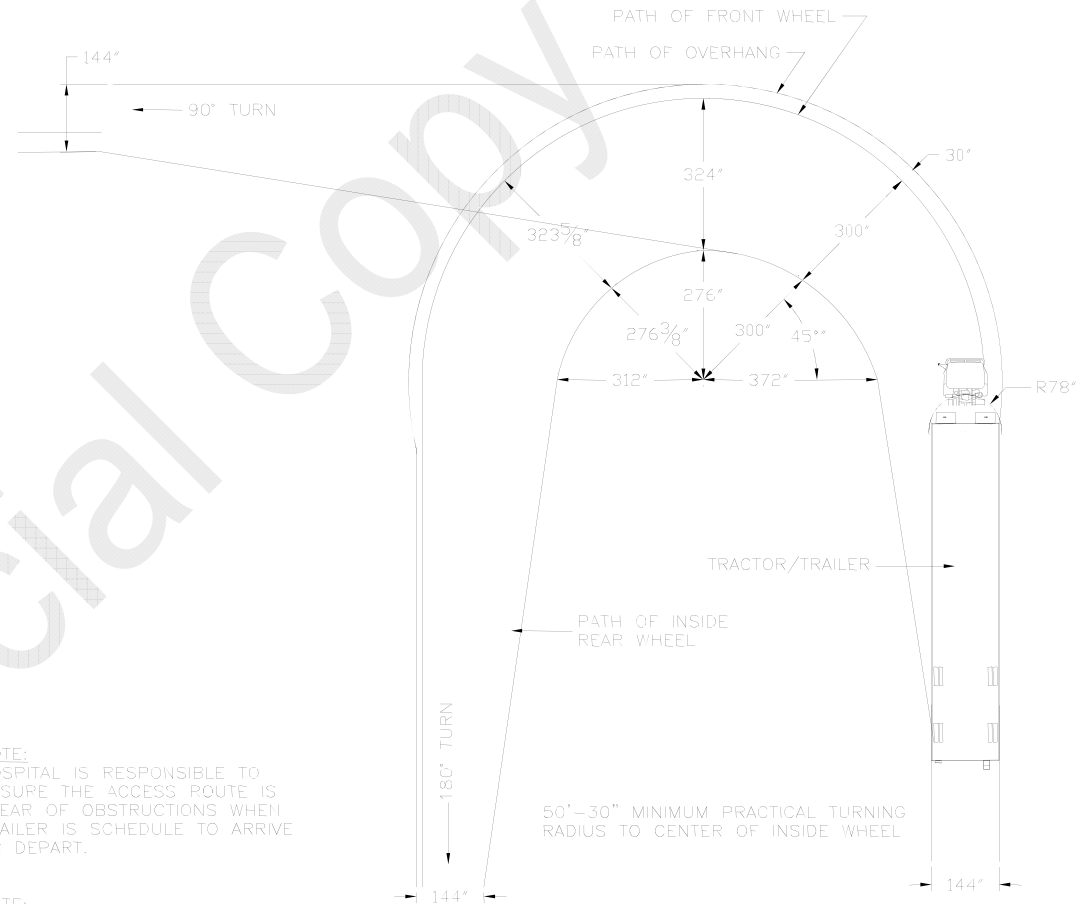
**Figure 6: Russellstoll Chart**

RUSSELLSTOLL RECEPTACLE CHART			
AMP / WIRE	DESCRIPTION		RECEPTACLE
	WIRES	POLES	PART NUMBER
MAXIMUM WIRE SIZE FOR LUG # 1/0	5	4	480 VOLT (200 AMP) 5 WIRE RUSSELLSTOLL RECEPTACLE DF 2504 FRABO THIS RECEPTACLE MUST BE WATERPROOF
480 VOLT AC DEDICATED POWER LINE FROM MAIN TRANSFORMER STATION	3Ø	WYE CONNECTION 150 AMP TOTAL 3Ø NEUTRAL AND GROUND	
RUSSELLSTOLL MATING PLUG PART# DS2504MP000/DF2032 5 WIRE/4 POLE		MAIN DISCONNECT 3/N/PE AC 480 VOLT 150 AMP FUSED DISCONNECT	
			
RECEPTACLE AND INSTALLATION PROVIDED BY CUSTOMER			DRAWN BY: CLH DRAWING NUMBER: DET-0048
			REV 

The information contained in this booklet is the property of AMST. The contents are confidential. They may not be used, either partially or wholly, for any purpose inconsistent with the purpose for which it was produced. The contents may not be reproduced or disclosed without written permission of Advanced Mobility Specialty Vehicles.

**Figure 7: Turning Requirements**

A minimum dimension of 79" is required from rearmost projection to centerline of kingpin. This provides swing clearance for generator set which is mounted on the front of the trailer. Hospital is responsible to ensure the access route is clear of obstructions when the trailer is scheduled to arrive or depart. The 50' minimum outside turning radius shown here has been calculated using an international harvester (Navistar) tractor Model COF-9670 with a 161" wheelbase. Turning radius will vary with towing tractor. Customer must confirm the turning radius on their tractor and prepare each site with adequate space to accommodate it.



**NOTE:**  
HOSPITAL IS RESPONSIBLE TO ENSURE THE ACCESS ROUTE IS CLEAR OF OBSTRUCTIONS WHEN TRAILER IS SCHEDULE TO ARRIVE OR DEPART.

**NOTE:**  
THIS DRAWING IS A TYPICAL CONFIGURATION! THE ACTUAL TURNING RADIUS WILL DEPEND ON TYPE OF TRACTOR, TRACTOR WHEEL BASE, FIFTH WHEEL PLACEMENT, ETC.